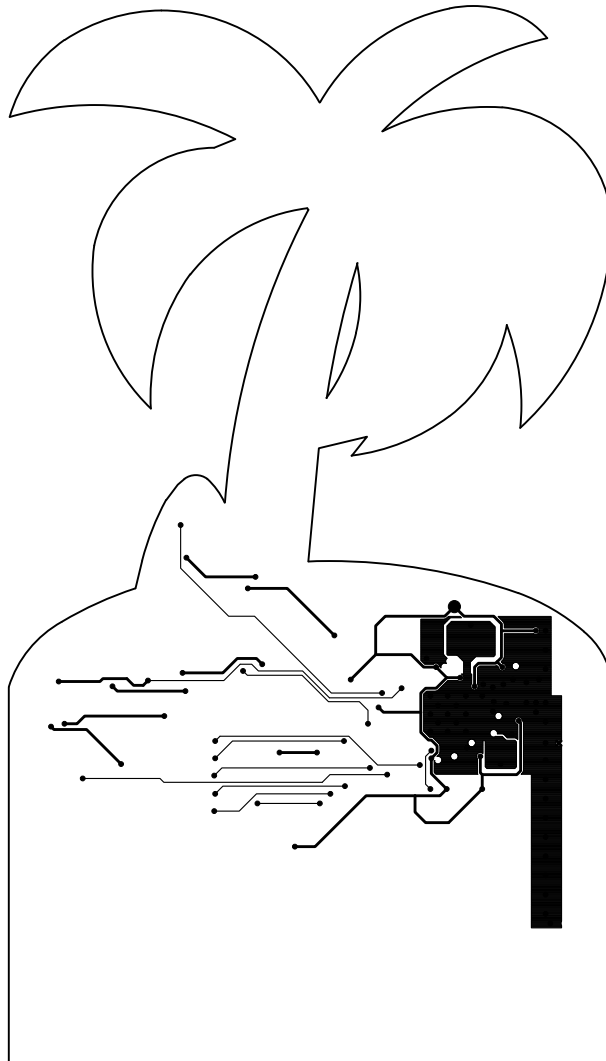


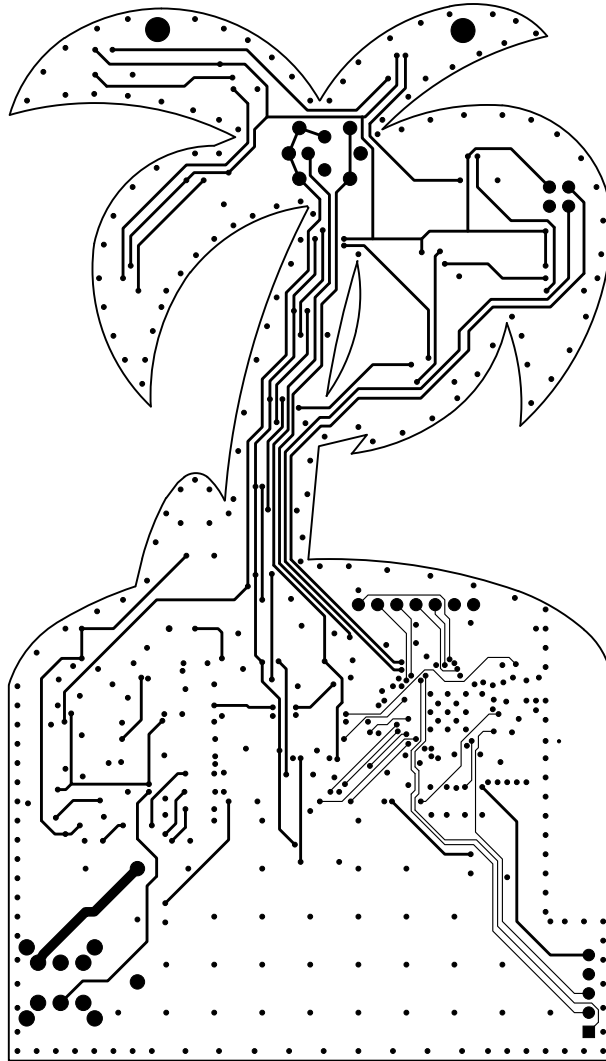
BOARD THICKNESS 0.062"

Engineer:			
Customer:			
PHONE:			
PCB Designer:	Project Title: 2018 BEACH DAY		
Date: July 6, 2018	SHEET: 1 of 9		
UNLESS OTHERWISE SPECIFIED .X +/-0.262MM (0.03") .XX +/-0.254MM (0.01") .XXX +/-0.127MM (0.005") ANGLES: +/- 0° 30"	Gerber Data: LAYER 1 (TOP SIDE)	PN: 2018	
	CAM: 2018-XB_L01.PHO	REV: XB	
	PCB: 2018-XB.pcb		



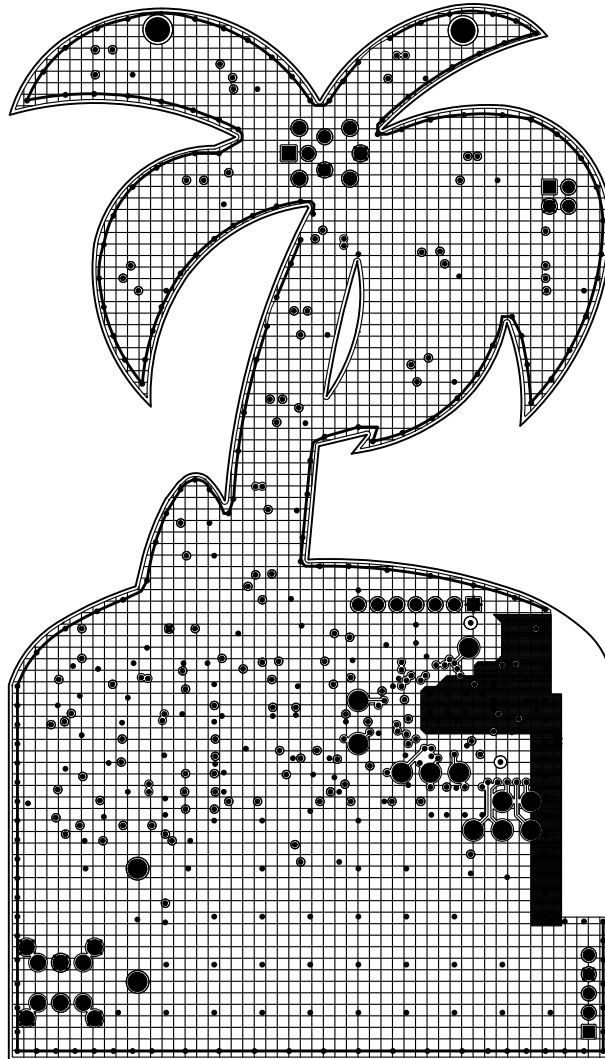
BOARD THICKNESS 0.062"

Engineer:			
Customer:			
PHONE:			
PCB Designer:	Project Title: 2018 BEACH DAY		
Date: July 6, 2018			
<small>UNLESS OTHERWISE SPECIFIED</small> .X +/-0.762MM (0.03") .XX +/-0.254MM (0.01") .XXX +/-0.127MM (0.005") ANGLES: +/- 0° 30"	Gerber Data: LAYER 2 (SIGNAL)	SHEET: 2 of 9	
	CAM: 2018-XB_L02.PHO	PN: 2018	REV: XB
	PCB: 2018-XB.pcb		



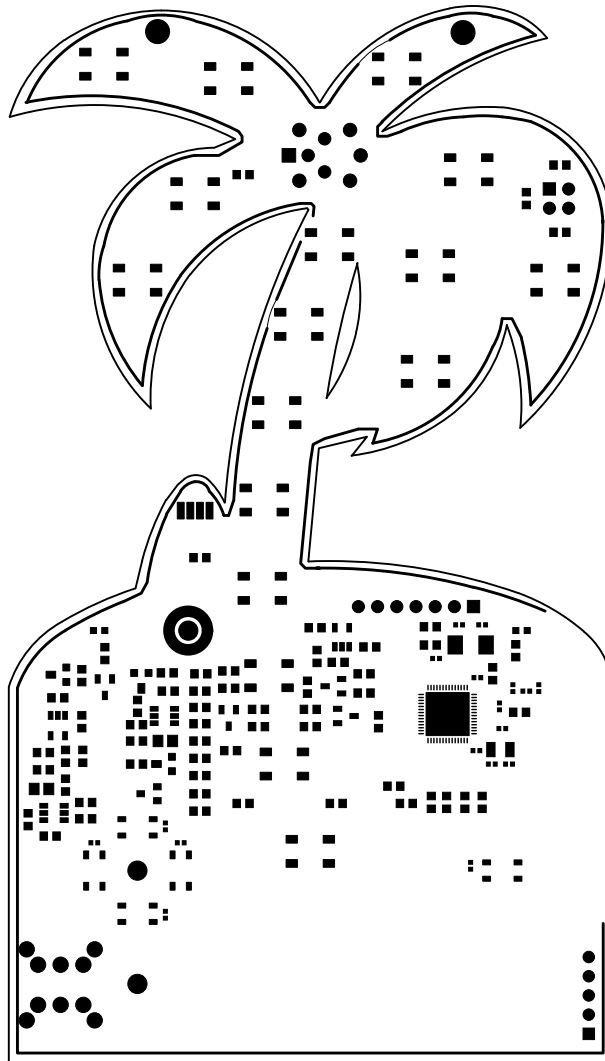
BOARD THICKNESS 0.062"

Engineer:			
Customer:			
PHONE:			
PCB Designer:	Project Title: 2018 BEACH DAY		
Date: July 6, 2018			
<small>UNLESS OTHERWISE SPECIFIED .X +/-0.262MM (0.03") .XX +/-0.254MM (0.01") .XXX +/-0.127MM (0.005") ANGLES: +/- 0' 30"</small>	Gerber Data: LAYER 3 (SIGNAL)	SHEET: 3 of 9	
	CAM: 2018-XB_L03.PHO	PN: 2018	REV: XB
	PCB: 2018-XB.pcb		



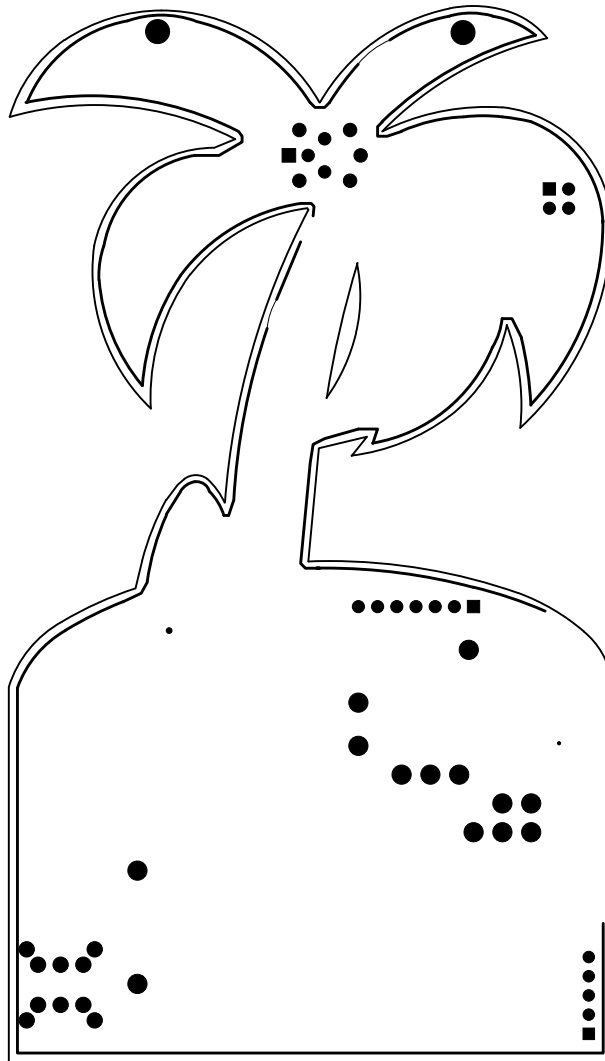
BOARD THICKNESS 0.062"

Engineer:			
Customer:			
PHONE:			
PCB Designer:	Project Title: 2018 BEACH DAY		
Date: July 6, 2018	SHEET: 4 of 9		
<small>UNLESS OTHERWISE SPECIFIED .X +/-0.252MM (0.03") .XX +/-0.254MM (0.01") .XXX +/-0.127MM (0.005") ANGLES: +/- 0° 30"</small>	Gerber Data: LAYER 4 (BOTTOM SIDE)	PN:	REV: XB
	CAM: 2018-XB_L04.PHO	2018	
	PCB: 2018-XB.pcb		



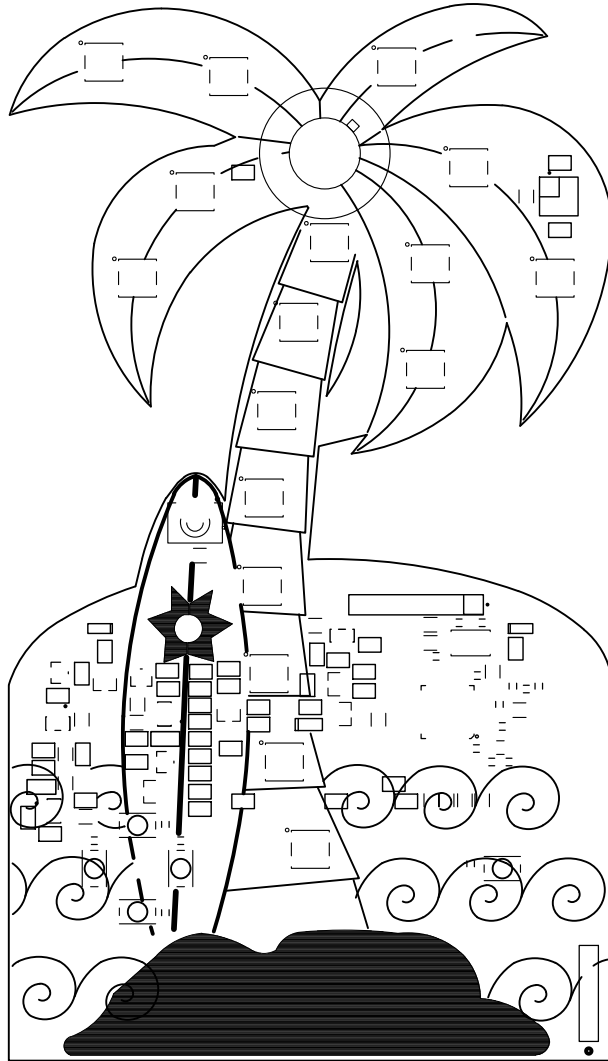
BOARD THICKNESS 0.062"

Engineer:			
Customer:			
PHONE:			
PCB Designer:	Project Title: 2018 BEACH DAY		
Date: July 6, 2018			
<small>UNLESS OTHERWISE SPECIFIED</small> .X +/-0.262MM (0.03") .XX +/-0.254MM (0.01") .XXX +/-0.127MM (0.005") ANGLES: +/- 0° 30"	Gerber Data: SOLDERMASK (TOP SIDE)	SHEET: 5 of 9	
	CAM: 2018-XB_SMT.PHO	PN: 2018	REV: XB
	PCB: 2018-XB.pcb		



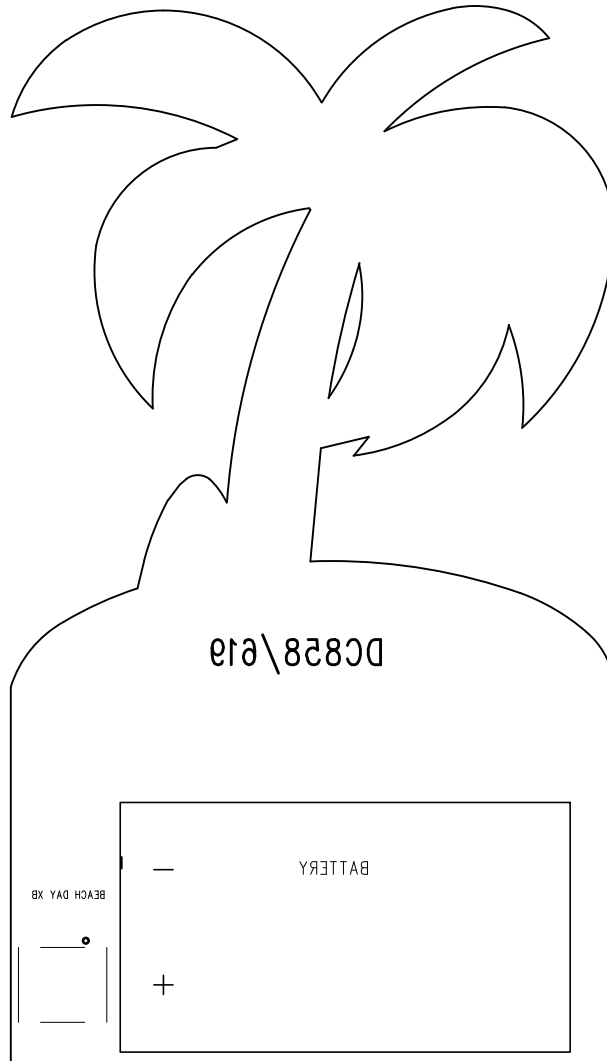
BOARD THICKNESS 0.062"

Engineer:			
Customer:			
PHONE:			
PCB Designer:	Project Title: 2018 BEACH DAY		
Date: July 6, 2018			
<small>UNLESS OTHERWISE SPECIFIED</small> .X +/-0.762MM (0.03") .XX +/-0.254MM (0.01") .XXX +/-0.127MM (0.005") ANGLES: +/- 0° 30"	Gerber Data: SOLDERMASK (BOTTOM SIDE)	SHEET: 6 of 9	
	CAM: 2018-XB_SMB.PHO	PN: 2018	REV: XB
	PCB: 2018-XB.pcb		



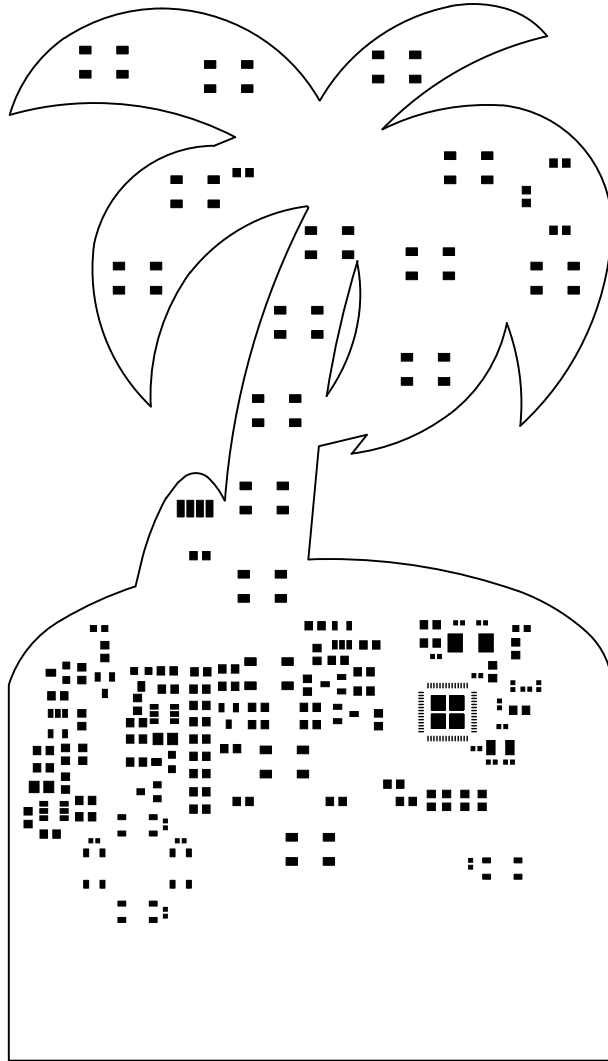
BOARD THICKNESS 0.062"

Engineer:			
Customer:			
PHONE:			
PCB Designer:	Project Title: 2018 BEACH DAY		
Date: July 6, 2018			
<small>UNLESS OTHERWISE SPECIFIED .X +/-0.262MM (0.03") .XX +/-0.254MM (0.01") .XXX +/-0.127MM (0.005") ANGLES: +/- 0° 30"</small>	Gerber Data: SILKSCREEN (TOP)	SHEET: 7 of 9	
	CAM: 2018-XB_SST.PHO	PN: 2018	REV: XB
	PCB: 2018-XB.pcb		



BOARD THICKNESS 0.062"

Engineer:			
Customer:			
PHONE:			
PCB Designer:	Project Title: 2018 BEACH DAY		
Date: July 6, 2018			
<small>UNLESS OTHERWISE SPECIFIED</small> .X +/-0.262MM (0.03") .XX +/-0.254MM (0.01") .XXX +/-0.127MM (0.005") ANGLES: +/- 0° 30"	Gerber Data: SILKSCREEN (BOTTOM)	SHEET: 8 of 9	
	CAM: 2018-XB_SSB.PHO	PN: 2018	REV: XB
	PCB: 2018-XB.pcb		



BOARD THICKNESS 0.062"

Engineer:			
Customer:			
PHONE:			
PCB Designer:	Project Title: 2018 BEACH DAY		
Date: July 6, 2018			
<small>UNLESS OTHERWISE SPECIFIED</small> .X +/-0.262MM (0.03") .XX +/-0.254MM (0.01") .XXX +/-0.127MM (0.005") ANGLES: +/- 0° 30"	Gerber Data: PASTE MASK(TOP SIDE)	SHEET: 9 of 9	
	CAM: 2018-XB_PMT.PHO	PN: 2018	REV: XB
	PCB: 2018-XB.pcb		